

## PLAN ESPECIAL DE MEJORA DE LA ORDENACIÓN PORMENORIZADA MANZANA B DE LA ZONA ESTE DE LA MORALEJA

Ámbito de la Carrascosa  
Alcobendas (Madrid)



### 03 - ESTUDIO ACÚSTICO

ANEXO II. Actualización de los Mapas Estratégicos de Ruido. Aeropuerto Madrid-Barajas (Ministerio de Fomento)


**Adaptado al Informe Ambiental emitido por la Dirección General de Sostenibilidad y Cambio Climático de la CAM (Exp. 10-UB2-000053.4/2019).**


# ANEXO I

## PLANEAMIENTO URBANÍSTICO



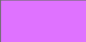





# Aeropuerto de Madrid-Barajas CLASIFICACIÓN DEL SUELO

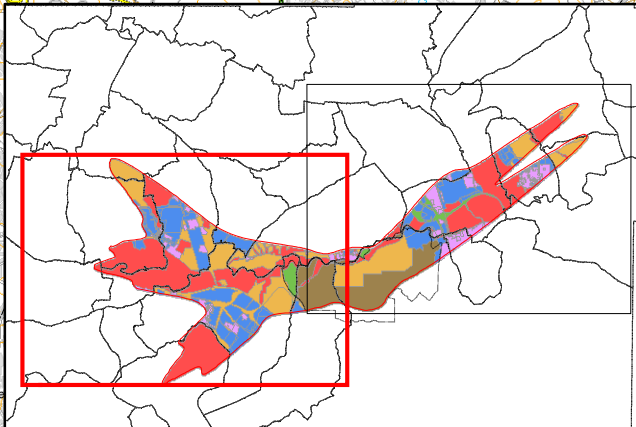
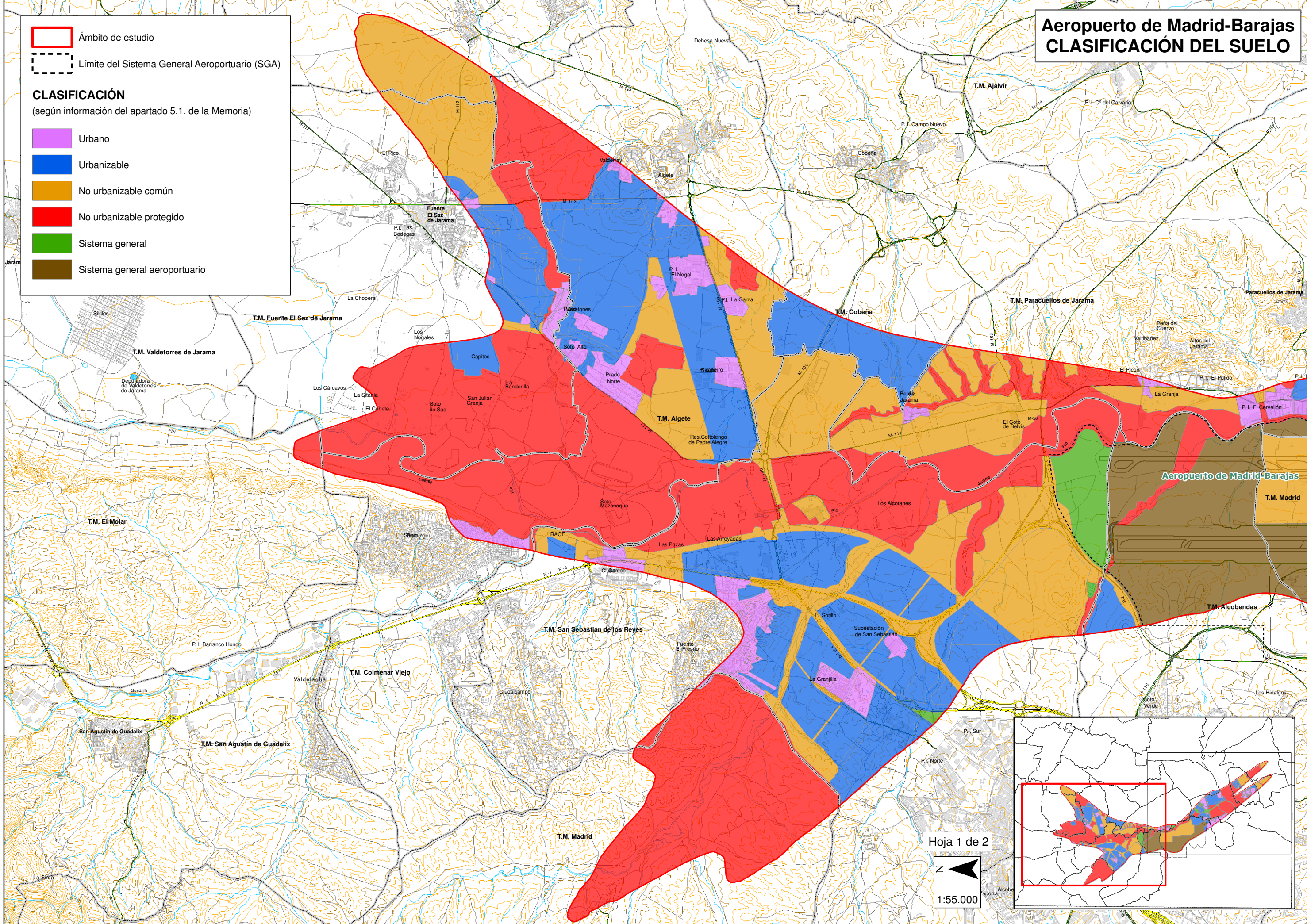
 Ámbito de estudio

 Límite del Sistema General Aeroportuario (SGA)

### CLASIFICACIÓN









(según información del apartado 5.1. de la Memoria)

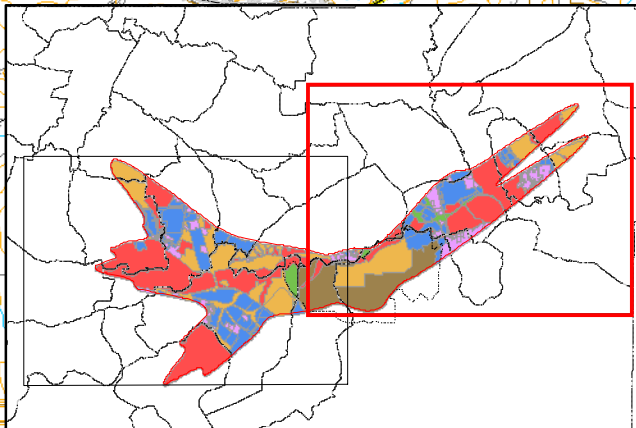
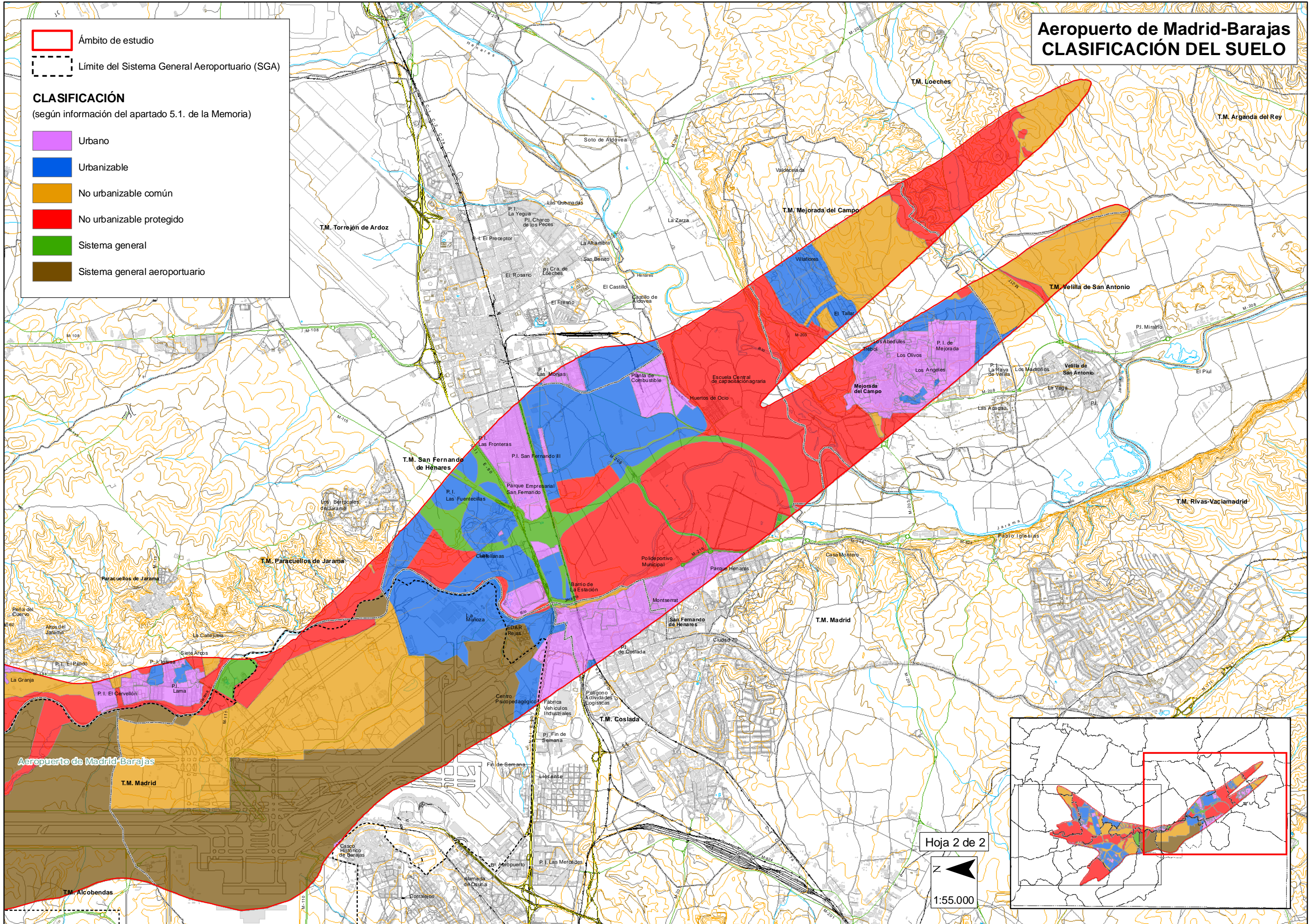
-  Urbano
-  Urbanizable
-  No urbanizable común
-  No urbanizable protegido
-  Sistema general
-  Sistema general aeroportuario





# Aeropuerto de Madrid-Barajas CLASIFICACIÓN DEL SUELO


-  Ámbito de estudio
  -  Límite del Sistema General Aeroportuario (SGA)
- CLASIFICACIÓN**  
(según información del apartado 5.1. de la Memoria)
-  Urbano
  -  Urbanizable
  -  No urbanizable común
  -  No urbanizable protegido
  -  Sistema general
  -  Sistema general aeroportuario




Hoja 2 de 2  
N  
1:55.000









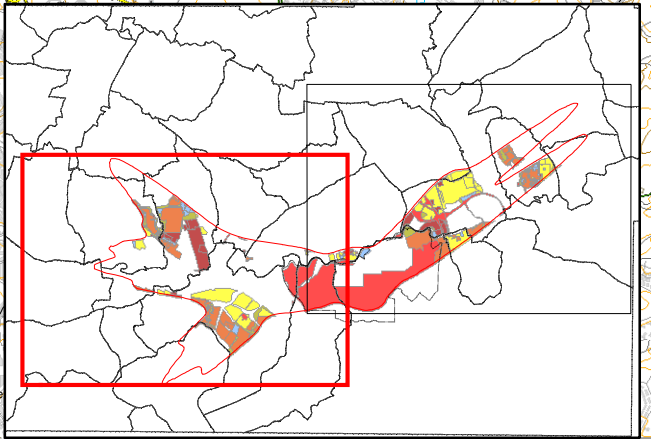
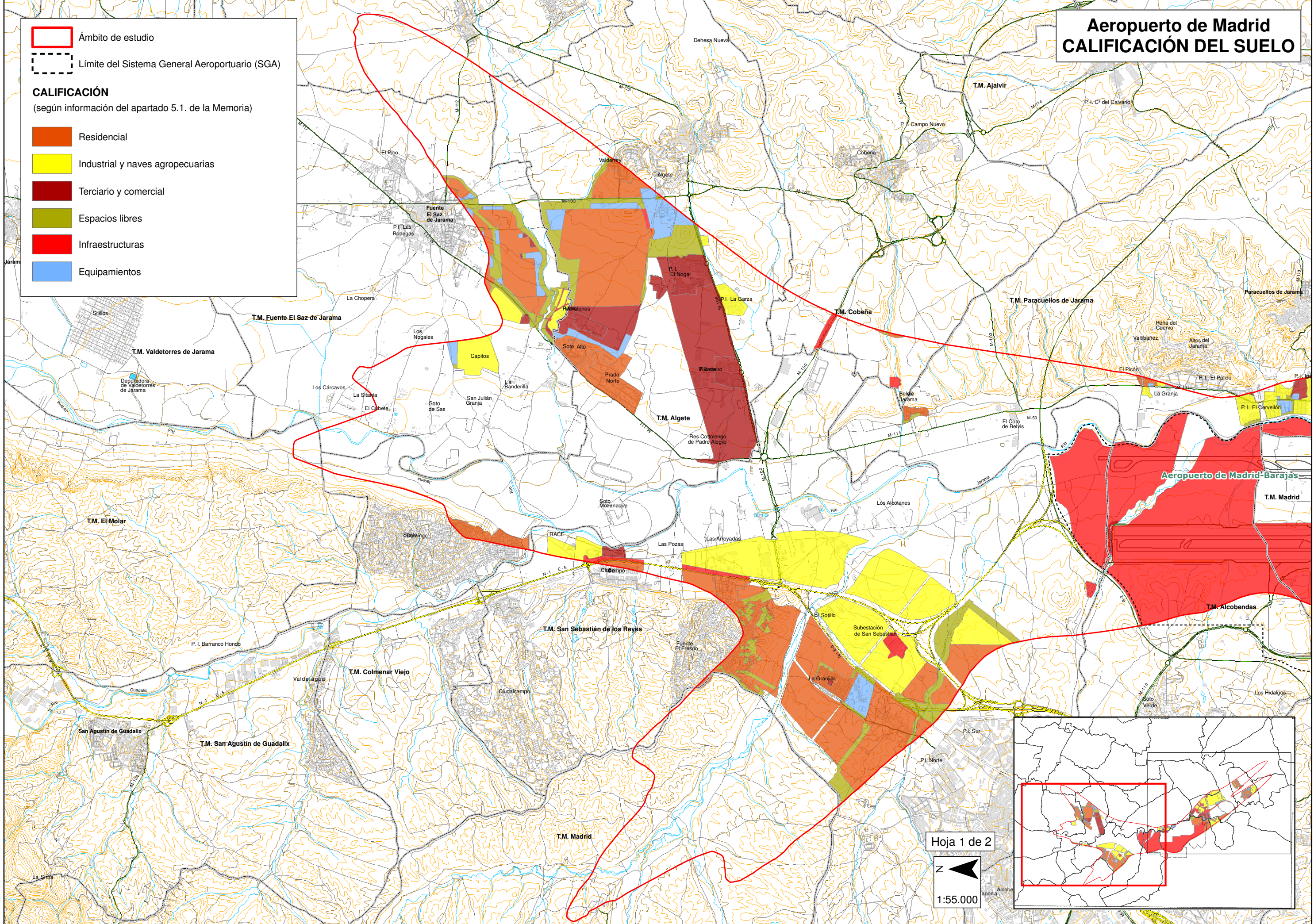
# Aeropuerto de Madrid CALIFICACIÓN DEL SUELO

 Ámbito de estudio

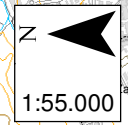
 Límite del Sistema General Aeroportuario (SGA)

**CALIFICACIÓN**  
(según información del apartado 5.1. de la Memoria)

-  Residencial
-  Industrial y naves agropecuarias
-  Terciario y comercial
-  Espacios libres
-  Infraestructuras
-  Equipamientos




Hoja 1 de 2




1:55.000






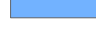


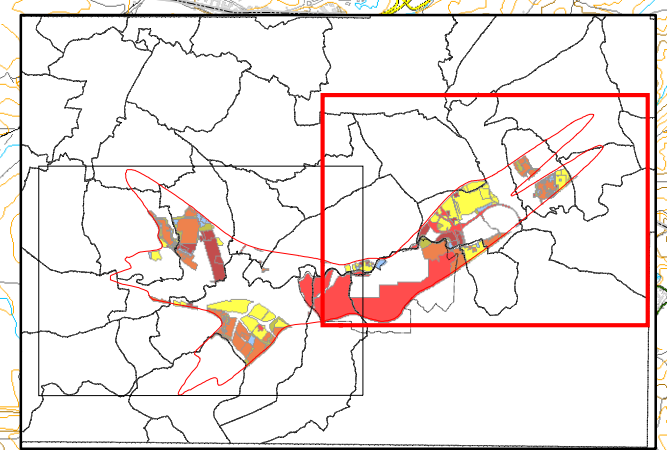
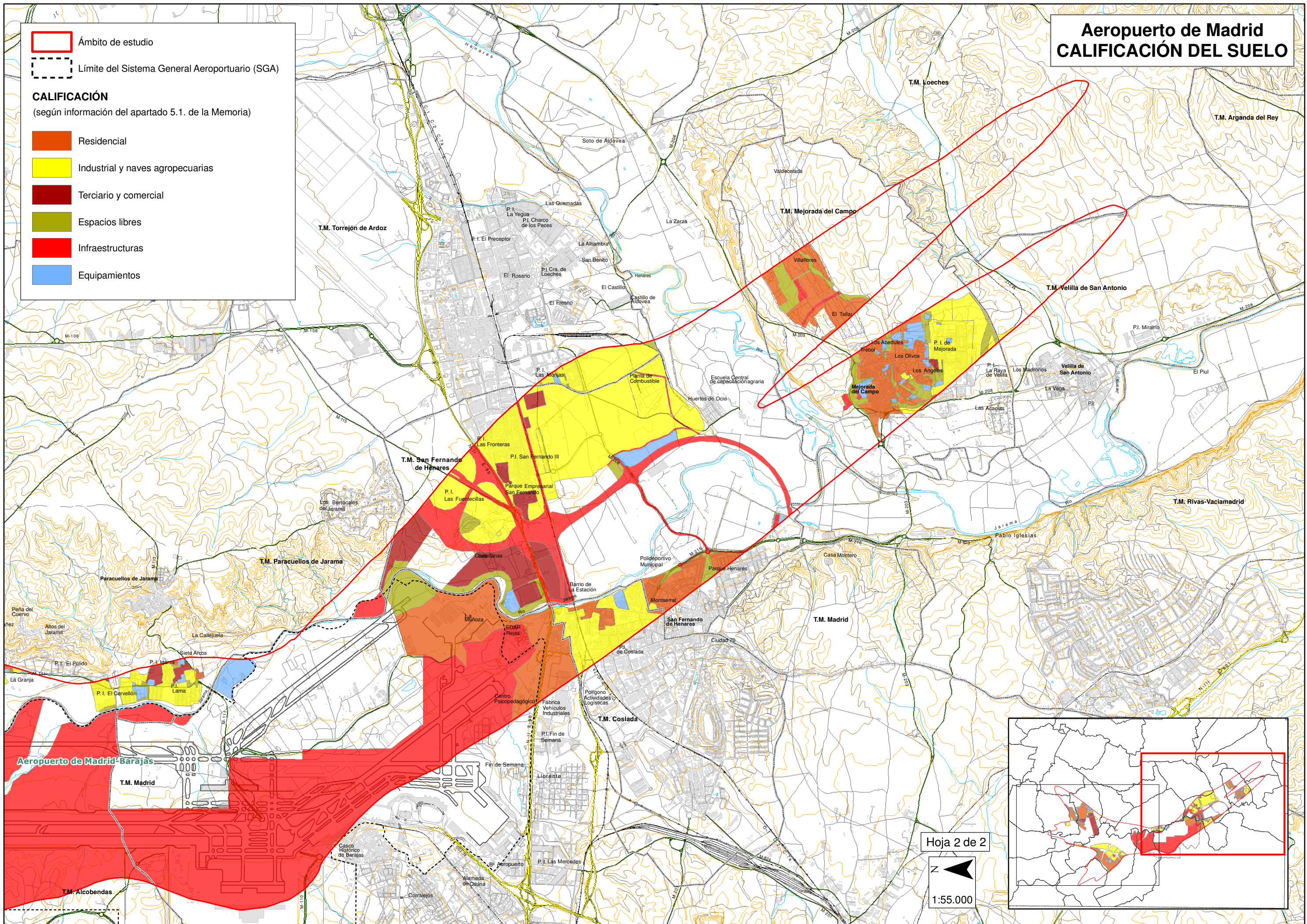
# Aeropuerto de Madrid CALIFICACIÓN DEL SUELO

 Ámbito de estudio


 Límite del Sistema General Aeroportuario (SGA)

**CALIFICACIÓN**  
(según información del apartado 5.1. de la Memoria)

-  Residencial
-  Industrial y naves agropecuarias
-  Terciario y comercial
-  Espacios libres
-  Infraestructuras
-  Equipamientos



Hoja 2 de 2

  
Z  
1:55.000