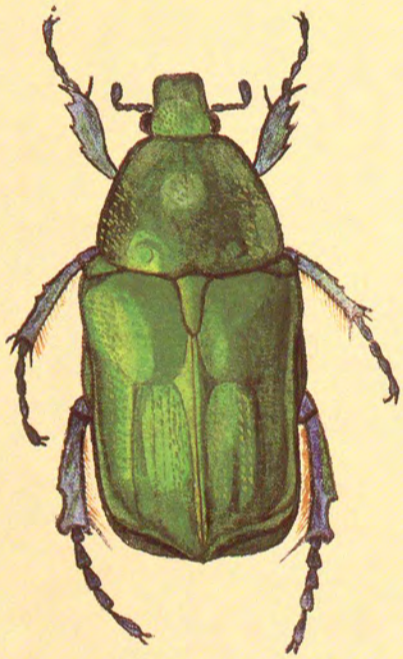


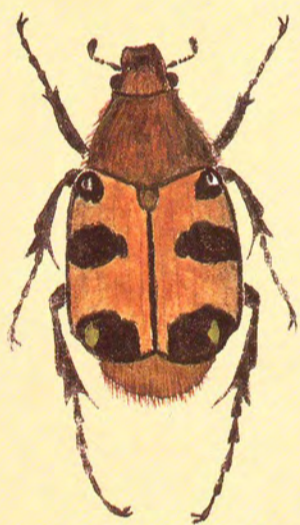
E L M U N D O

D E L O S I N S E C T O S

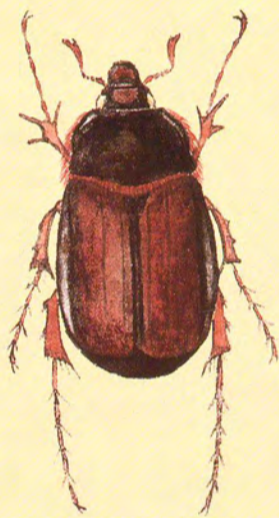
U N A F A U N A D I M I N U T A



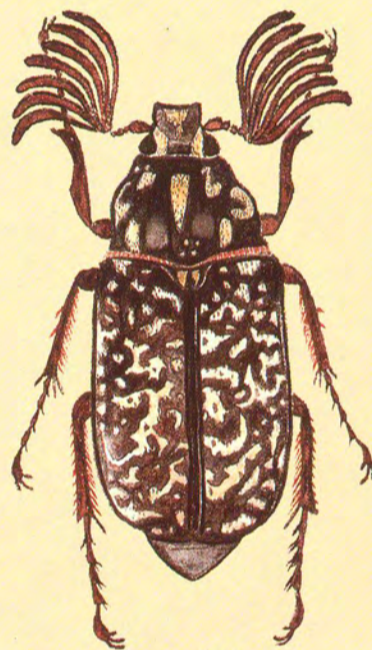
- *Eupotosia affinis* -
Cetoniido



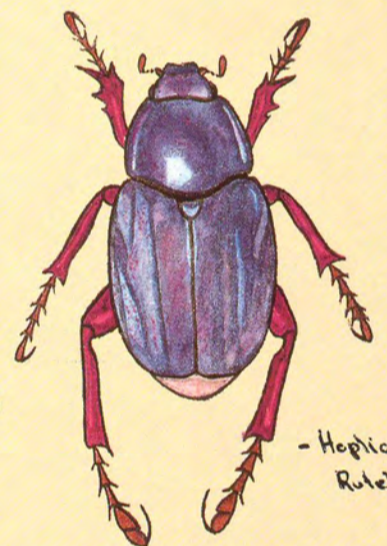
- *Trichius ruscaceus* -
Cetoniido



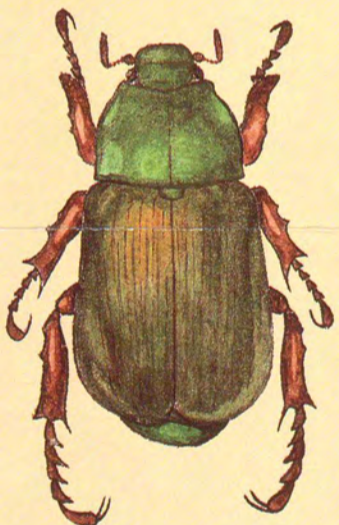
- *Elaphocera bedeawi* -
Melolontido



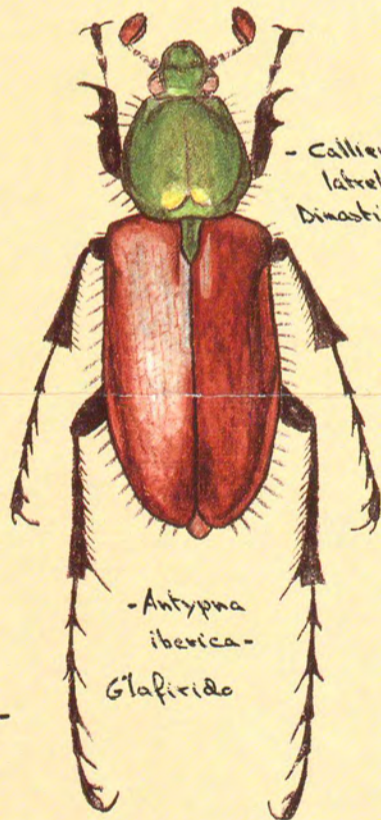
- *Pollyphylla fullo* -
Melolontido



- *Hoptia coerulea* -
Rutelido

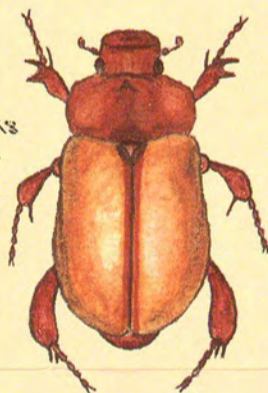


- *Anomala rugatipennis* -
Rutelido



- *Antypna iberica* -
Glafirido

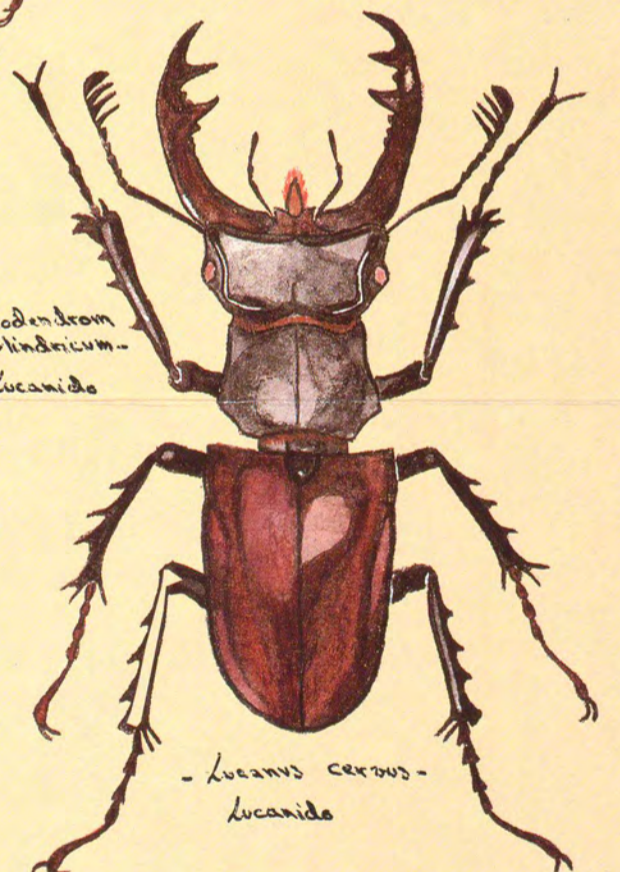
- *Callienemis latrellei* -
Dinastido



- *Synodendrom cylindricum* -
Lucanido



- *Hymenophia rugulosa* -
Melolontido



- *Lucanus cervus* -
Lucanido

C O L E C C I Ó N E N T O M O L Ó G I C A D E

CÉSAR OLMOS